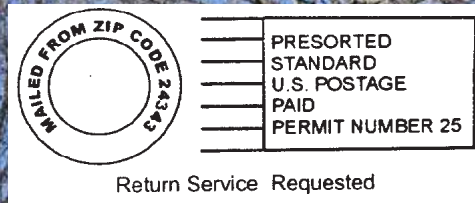


Dawn Auction Co.  
 235 West Stuart Drive  
 Hillsville, Virginia 24343  
 (276) 728-9181  
 www.dawnauction.com

# 2 DAY ABSOLUTE AUCTION APRIL 26 & 27 — 10:00 AM



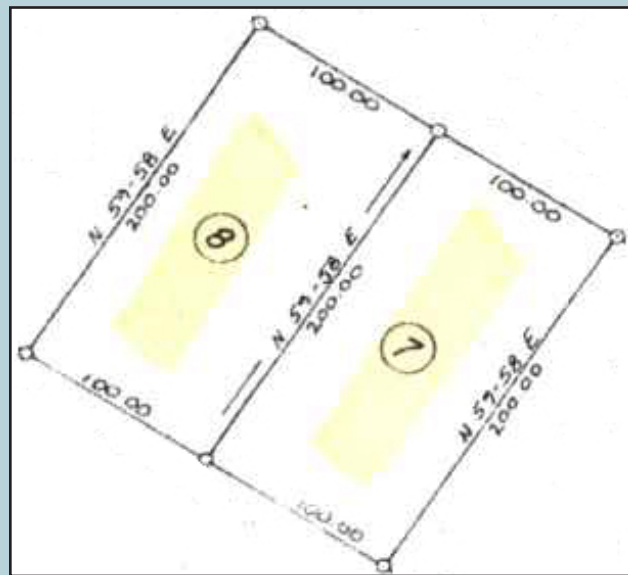
**FRI., APRIL 26th:** 1974 CORVETTE (PROJECT) - TRAILERS - VEHICLES - TOOLS - FURNITURE & PERSONAL PROPERTY  
**SAT., APRIL 27th:** LOVELY VINYL SIDED 3 BDRM./1.5 BATH HOME W/32'x46' DET. GARAGE ON .91 (+-) AC. IN BACKPINE SUBDIVISION - ALSO DRAGSTERS - ENC. TRAILER - NUMEROUS PARTS & MUCH MORE! **SALE SITE: 105 Aldred Ln. - Galax, VA 24333**

# 2 DAY ABSOLUTE AUCTION FRI & SAT, APRIL 26 & 27, 2024 10:00 AM BOTH DAYS!!



**FRI., APRIL 26th:** 1974 CORVETTE (PROJECT) - TRAILERS - VEHICLES - TOOLS - FURNITURE & PERSONAL PROPERTY  
**SAT., APRIL 27th:** LOVELY VINYL SIDED 3 BDRM./1.5 BATH HOME W/32'x46' DET. GARAGE ON .91 (+-) AC. IN BACKPINE SUBDIVISION

ALSO MOTOR HOME - DRAGSTERS - CARGO MATE ENCLOSED TRAILER w/DRAGSTER LIFT - NUMEROUS PARTS - SCOOTERS - GUN SAFE - GUNS & MUCH, MUCH MORE!! **SALE SITE: 105 Aldred Ln. - Galax, VA 24333**



**TERMS:** Real Estate 10% deposit day of auction, balance within 30 days at closing. Personal Property cash, check or credit card day of auction. All federal firearms regulations will apply.

**INSPECTION:** Call our office anytime to see this property. Personal Property 1.5 hrs. prior to auction.

**DIRECTIONS:** In Galax, VA at Walmart stoplight continue E. on Rt.# 58 for 1.0 mi. to Beeline Dr., turn L onto Beeline Dr. and go to end then turn R on Glendale Rd. for 200' to Aldred Ln. turn L and go 1/10 mi. to home on left.



See Survey Plat on Back

## DAWN AUCTION CO., INC.

DENNIS WARD 276-733-6633

CHRIS WARD 276-733-9811

MIKE DALTON 276-733-5614

BRIAN HALL 276-237-1419

235 West Stuart Drive  
 Hillsville, VA 24343  
 276-728-9181  
 www.dawnauction.com

**ITEMS TO BE SOLD ON FRI., APRIL 26th  
STARTING AT 10:00 AM**

1974 Chevrolet Corvette t-tops – needs restoration (350 eng., auto, 400 turbo, not on road since 1997 – 150,000miles), 1993 16' Tow Rite open car trailer, 2001 Pontiac van (motor blown), 1994 Jeep Cherokee w/over 300,000 mi. (scrap), 2001 Saturn car (100,000+ miles, runs, good tires – have title), 5'x8' utility trailer (no title), Troy Bilt snow blower, vinyl outbuilding, yard/garden tools, white porch swing, garden park bench, rolls of insulation -10, propane gas heater, Jen Air cooktop (new), refrigerators, toaster oven, Coleman propane stove, golf cart cover, EZ up tent, 50" TV, rack stereo, upright freezer, sm. kitchen appliances, pressure cooker, dining table w/6 chairs, China cabinet, 4 bar stools, king bed, chest of drawers, sofa & matching recliner, wood tables, 7 boxes of wood flooring, lamps, racing car light fixture, Christmas & Halloween décor, pots/pans, plastic containers, Rainbow vacuum, Longaberger baskets, pictures, antique radio, old bottles, Princess House and other glassware, hammock & stand, firepit, 4 pc. wicker patio furniture, patio table w/4 stools, hot tub, Vizio TV, deck box and much more!



*This vinyl sided home features a living room w/gas fireplace, kitchen/dining combo, 3 bedrooms, 1.5 baths and full unfinished basement. Heat pump for heat & air, public water & sewer, metal roof only 6 years old and gorgeous covered back deck perfect for entertaining. Home sits on 2 lots in Backpine Subdivision with two paved drives and detached 32'x46' vinyl sided garage w/conc. floor, elec., 3 garage doors & entry door. Great location only minutes from downtown Galax, I-77 Exit# 14 and New River Trail/New River!*

**NOTE: REAL ESTATE WILL BE SOLD SAT., APRIL 27th at 10:00 AM**



**OVERALL VIEW OF BOTH LOTS**

**SAT., APRIL 27th**

**THE FOLLOWING ITEMS WILL BE SOLD ONLINE & LIVE BEGINNING AT 12:00 NOON**

2002 Undercover Dragster w/632 cu. in. motor-power glide-411 rear end (motor ran last time about 1 year ago), 890 Crows eng. Junior dragster, 12 sec. motor Mike Boss junior dragster, Jr. Dragster Parts, 2015 Cargo Mate enclosed trailer 32' w/dragster lift, 10x20 pit mat & 10x30 pit mats, Pro Jacks, Profiler 2-4 Set up with NOS 18 degree tall block, Moser 3.89 gear 40 splines axes, 632 Piston, 1250 Quick Fuel Carb., Power Master starter for a Chevy, Jessel rocker arms used for big duke 18 degree heads plus rebuild parts, MSD digital -7 ignition box, Morison ultra 40 plus wires bbc, Speed Tech fogger system, NOS parts & jets, 1050 GFT carburetor, Complete vac system, Quick Fuel fuel pump, New Wilwood master cylinder, Aermotive fuel pump, 2 CSR water pump motors (1) new and (1) used w/rebuild kit, (2) drums of c16 race fuel (1) full & (1) 3/4 full, Biondo powerglide shifter, 8" PTC converter 6000 stall, 10" converter NOS 5500 stall Greg Slack CDS, TCI 10" Street Fighter 3000 stall, Camaro 1st Gen. trick springs, 10-20 Pit Mat, 10-30 Pit Mat, Chassis Stabilizer, Dragster warm up stand, Chevrolet 468 big block motor (rebuilt 5 years ago and has less than 20 runs), 1968 Camaro trick front springs (Monrose – new), 1968 Camaro grill & trim, (2) 16 volt battery chargers & (1) 12 volt battery charger, Strange Alum Center Section, Moser 40 Spline 3.89 gear center section, Wiseco pistons for 632 cu. In. engine (new), Weather station w/pager, Honda 3000 inverter generator.

**ITEMS TO BE SOLD ON SAT., APRIL 27th AFTER SALE OF REAL ESTATE**

2001 Monaco Diplomat 40' motor home (8.3 cummings diesel & 2 slides), 1993 homemade 9' utility trailer, (2) Yamaha ZUMA 50 cc 2 stroke scooters, 1992 Chapparral 22' boat, 355 Chevy small block motor (not assembled), 57' Stainless steel – original parts & 57' Chev side trim, 57' Chevy power window kits – 2 wiring kit, Chevrolet 400 turbo transmission (has trans brake), Chevrolet 350 turbo transmission TCI w/manual valve body, 4 series Morose POS units for 12 bolt, 12 bolt Richmond gear 411, 12 bolt Richmond gear 488, 11" Diaphragm Chevrolet clutch kit (new), Chevy Big Block high performance heads (original LS7 needs rebuilt), Turbo Start 12v battery (new in box), 1967 short block 327 motor, (7) Wally's NHRA trophies, 70's model Honda 4 wheeler, J.D. mod. 318 riding mower (18hp & 46" cut), J.D. hydraulic 4'snow blade (fits mod. 318), Kubota 4' 3pt hitch for lawn mower, motor home parts, numerous tools/parts and more!!

**SAFES/GUNS:** Cannon Gun Safe (26"wx18"dx62"h), Sentry Safe (16.5" wx17.5"dx17.5"h), Win. Mod. 1400 12 ga. 26" skeet barrel, Rem. Genesis Buckmaster 50 cal. muzzle loader, Ruger SR-9 mod. 03340 9mm, Rem. Mod. 770 300 WIN MAG.

