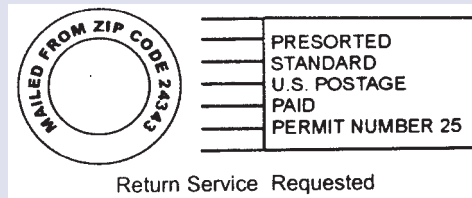


Dawn Auction Co.
 235 West Stuart Drive
 Hillsville, Virginia 24343
 (276) 728-9181
 www.dawnauction.com

ABSOLUTE ESTATE AUCTION
AUG 12, 2023 — 10:00 AM



OPEN HOUSE
SUN., JULY 30TH
2pm - 4pm



LOVELY 1.5 STORY WOOD SIDED A-FRAME HOME ON WOODED LOT IN TIMBERLANE SUBDIVISION

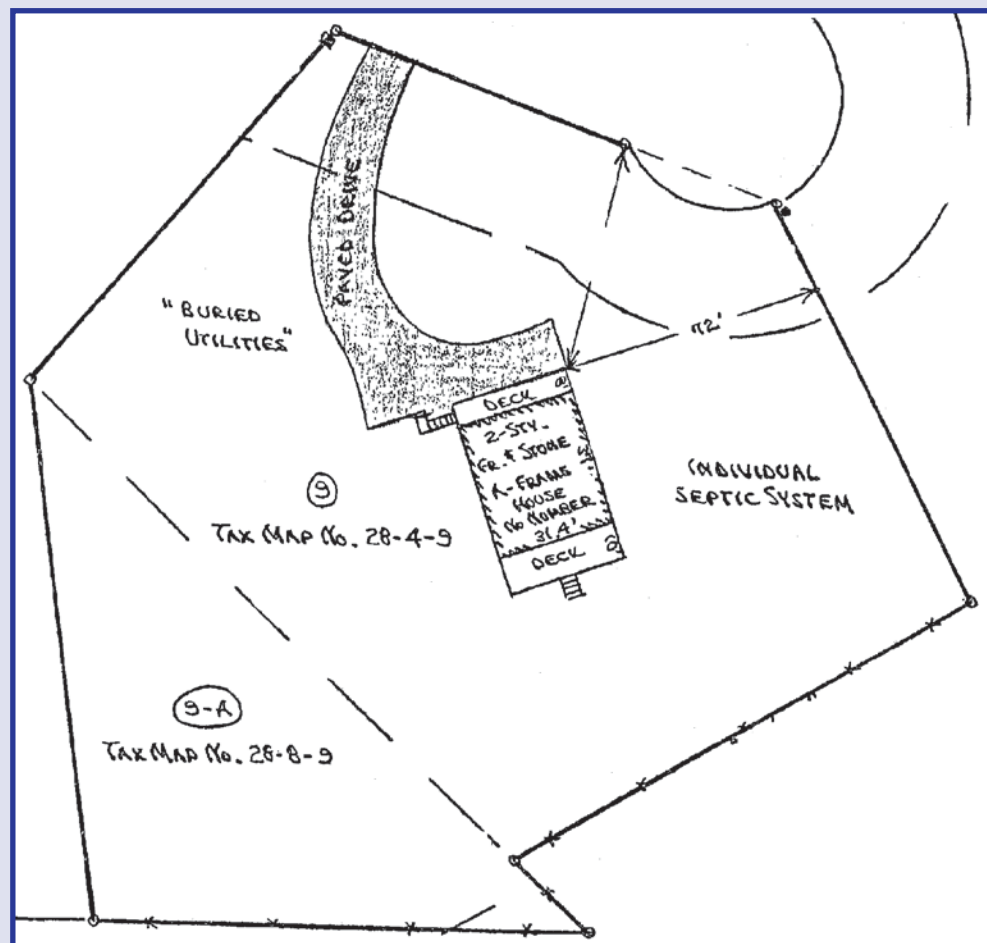
2019 HARLEY ROAD GLIDE SPECIAL - 2013 HARLEY FAT BOY - 1982 BMW MOTORCYCLE - NUMEROUS HARLEY PARTS/ ACCESSORIES/CLOTHES - 2000 JEEP CHEROKEE 4x4 - 2002 CHEVROLET 1500 TRUCK - SHOP EQUIP - TOOLS. - J.D. RIDING MOWER - MOTORCYCLE TRAILER - ENCLOSED TRAILER - COMPUTER/ELECTRONICS - COLLECTIBLES & Personal Property of the late Jeffrey Hasson - 7294 Woodland Way - Fairlawn, VA 24141

TERMS: Real Estate 10% deposit day of auction, balance within 30 days at closing. Personal Property cash, check or credit/debit card day of auction.

INSPECTION: Open house Sunday July 30, 2023 from 2:00 - 4:00 p.m. or call our office anytime to see this lovely property. Personal Property 1.5 hrs. prior to auction.

AUCTIONEER'S NOTE: I bet there is over \$10,000 worth of Jackets-vests-riding gear, etc.

DIRECTIONS: From Fairlawn, VA at int. of US Rt.# 11 & Rt.# 114 (at Sheetz/Hardees/Walmart), go E on Rt.# 114 for 4/10 mi. to Bellspring Rd., turn L & go 9/10 mi. to Timberlane Dr., turn L & go 3/10 mi. to Woodland Way, turn L & go 1/10 mi. to Home on Right. *Note: Limited Parking space - park where you can.*



ABSOLUTE ESTATE AUCTION

SAT., AUG. 12th, 2023 - 10:00 AM

LOVELY 1.5 STORY WOOD SIDED A-FRAME HOME ON WOODED LOT IN TIMBERLANE SUBDIVISION

OPEN HOUSE
SUN., JULY 30TH
2pm - 4pm



2019 HARLEY ROAD GLIDE SPECIAL - 2013 HARLEY FAT BOY - 1982 BMW MOTORCYCLE - NUMEROUS HARLEY PARTS/ ACCESSORIES/CLOTHES - 2000 JEEP CHEROKEE 4x4 - 2002 CHEVROLET 1500 TRUCK - SHOP EQUIP - TOOLS. - J.D. RIDING MOWER - MOTORCYCLE TRAILER - ENCLOSED TRAILER - COMPUTER/ELECTRONICS - COLLECTIBLES & Personal Property of the late Jeffrey Hasson - 7294 Woodland Way - Fairlawn, VA 24141

See Survey Plat on Back



DAWN AUCTION CO., INC.

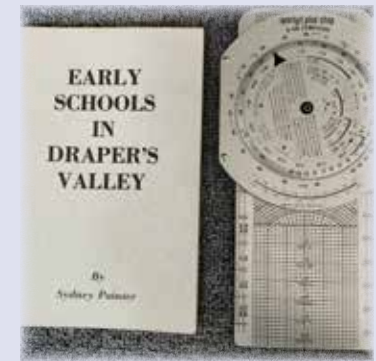
DENNIS WARD 276-733-6633 CHRIS WARD 276-733-9811 MIKE DALTON 276-733-5614 BRIAN HALL 276-237-1419

235 West Stuart Drive
 Hillsville, VA 24343
 276-728-9181
 www.dawnauction.com

1.5 story A-Frame wood sided home boasts over 2,000 sq. ft. of living area and features a great room (living/kitchen/dining) w/huge rock fireplace (gas logs) and double sliding doors to spacious decks on both front & back w/hot tub, 2 bedrooms, a full bath on the main level. Upstairs has an additional 3rd bedroom and ¾ bath. The lower level is partially finished to include a den w/brick fireplace (gas logs), 2 storage rooms and a garage w/conc. floor. Hardwood & carpet throughout, a heat pump provides heat/air and it is served by public water & sewer. Home sits on a wooded lot in the Timberlane Subdivision at the end of the cul-de-sac providing less traffic & more privacy. Great location in a really nice development. **NOTE: Potential buyers will have from Aug. 2nd until Aug. 11th to conduct a lead-based paint contamination test if they so desire.**



REAR OF HOME



etc. sm & lg), many gloves-pants-boots, headlight, vented windsplitter windshield, several backpacks, new wing reflector, motorcycle covers, (1) new Dunlop American Elite 130/60 B 19 tire, (1) new Michelin Commander III cruiser 140/75R17 tire, motorcycle tire change & balancing machine, **Trek dual sport 2 bicycle**. **NOTE: Having new key FOB made for Road Glide Special so can start and check mileage.**

SHOP EQUIP./TOOLS: Milwaukee HD right angle drill, lg. jack, 12" miter saw & stand (like new), Buffalo vise, DeWalt table saw, Brute lg. snow blower, 10 ton press, Ryobi 10" table saw, 1/2hp bench grinder, HD right angle grinder, Campbell Hausfield power washer, autocraft creeper seat, 4' LED shop light, Craftsman elec. hand buffer, Predator 3500 inverter, Echo backpack mod. PB-770T, Hitachi jig saws, portable Blue Hawk compressor, DeWalt router, Greenworks power washer 2000 PSI 1.2 GPM, Troy Bilt Chipper/Shredder 10 hp, Husqvarna special 50 chain saw, Yard Machine snow blower (5hp/22 in), Go Power elec. blower 530 CFM - 2 batteries & charger, metal detector, Pittsburg hydraulic punch driver set, hex key set, alum. mower ramps, power tools, shop vacs, 2x6x10 & 2x4's lumber, battery hedge trimmer & weedeater, yard/garden tools, wheelbarrow, electrical/plumbing supplies, paint touch up kit, (2) new in box Flow Frames (Bee Hive Equip.), Spectra precision laser with tripod, **450 rounds of 308 ammo.**

HOUSEHOLD/GLASSWARE/ELECTRONICS/MISC.: Samsung VRT steam washer and dryer, Broyhill glass top table & 4 chairs, (3) new in box swivel bar stools, antique Feder Vibro champ 6 amp amplifier, antique Davenport, antique metal shelving unit, antique occasional table, metal beds (king & full), bookcase, leather sofas, Samsung 46" flat screen TV, round "man hole cover" end table, chests, dressers, dehumidifier, entertainment center, marble top stand, wooden desk, cast iron tea kettle, dishes, kitchen appliances, Kitchen Aid mixer, Gourmia immersion sous vide pod (new in box), lg selection of glassware (Ruby Red-Amber-Green-Fostoria-Colonial Pattern), covered dishes, vases, Janome elec. mod. F4 sewing machine, a lot of expensive luggage & travel bags (Eagle Creek-LL Bean - Samsonite, etc.), rain wear, camping equip & clothing, Igloo coolers, (2) Flightcom pilot headsets, New G.E. digital messaging system, New Alpine AM/FM cassette receiver, **Aria banjo w/case**, (3) Harmonicas, Fossil watch, (8) baseball cards, **9 U.S. Proof Sets**, Book: **Early School in Draper Valley by Sydney Painter**, new 14" square light fixture, 4 drawer file cabinet, a ton of computer & electronics, Sharp stereo system, 78 RPM records(Flatt & Scruggs- Jimmie Rodgers), Toshiba projector, Zeus outdoor alarm, Go Pro camera, antique ceiling light fixture, hammock, lamps, Thue vehicle bike rack, upright freezer, Dyson vacuum system, Health Aids (O2 portable breathing machine, sm. nebulizer, etc.) Christmas decorations, seasonal décor & much more!

NOTE: HOUSE WILL BE SOLD FIRST AT 10:00 AM. ALL VEHICLES, MOTORCYCLES, RIDING MOWER, TRAILERS WILL BE SOLD AROUND 12:00 NOON.

Partial List of Personal Property at "Absolute Auction"

VEHICLES/MOWER/TRAILERS: 2000 Jeep Cherokee Sport 4x4 (4.0 liter auto, pw, pdl & 235,270 mi.), 2002 Chevrolet Silverado 1500 pickup (4x2-ext. cab w/vortec eng.-camper shell-pw-pdl-ac & 258,419 mi.), 2014 J.D. D130 Riding Mower (hydrostat - 22hp - 42" cut - **only 24 hours!**), Leonard 5'x10' enclosed trailer (roof damage), 5'x10' trailer (have title), (2) 10' Spirit 120 kayaks, (4) kayak paddles.

MOTORCYCLES & ACCESSORIES: 2019 Harley Road Glide Special (Stage 2 kit - custom dynamic lights-14" bars-sissy bar-Khrome Works true dual exhaust - 114 cu. in & several accessories -) 2013 Harley Fat Boy (103 cu. in. Built by Tilley's in NC - custom dynamic lights - 2 into 1 exhaust - custom headers & a lot of accessories - 47,050 mi.), 1982 BMW R1000RS (project bike - neighbor says all parts should be there), OTC Stinger series motorcycle/ATV lift (max 1,500 lbs.), 2013 ramp free motorcycle trailer, Harley motorcycle stand, 6 motorcycle helmets, (7) Harley leather jackets (size lg), vests, chaps, Harley non leather rain wear/jackets, Schubert (new in box) rider communication system, Harley luggage, back pack w/hydration, new after market Harley tour pack, several custom motorcycle seats, **many, many Harley accessories (some new in box), other jackets (Hein Gerkke-Vanson-Carhartt-Patagonia-Lands End,**

